

# SYSTEM CT 70



**5 CHAMBERS 2 GASKETS**  
**2 VENT PROFILES - CLASSIC - RONDO**  
**3 FRAMES STANDARD - 68mm, 78mm, 100mm**  
**2 FRAMES MONOBLOCK - 100mm, 120mm**  
**2 FRAMES RENOVATION - 38mm, 58mm**

CT 70 PVC-U system with rebate gasket is based on 5-chamber technology.

Excellent thermal insulation properties and narrow face widths are the distinctive features of this system. Perfectly sized reinforcing chambers meet the highest structural requirements.

Gaskets made of rubber EPDM are machine-rolled in the vent frame in the factory.

Depending on structural requirements, different reinforcing profiles in the outer and vent frames ensure that the windows are highly robust and durable.

White profiles are supplied with modern, silver-grey gaskets, foiled profiles with black gaskets as standard. Profiles can be coloured with a large selection of woodgrains and single colour decorative foils.

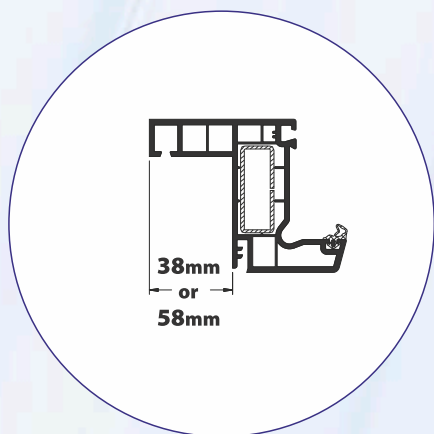


**CLASSIC**

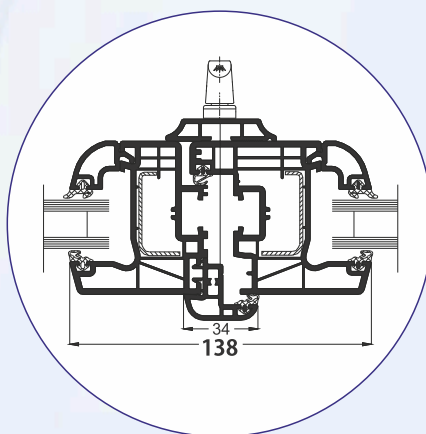


**RONDO**

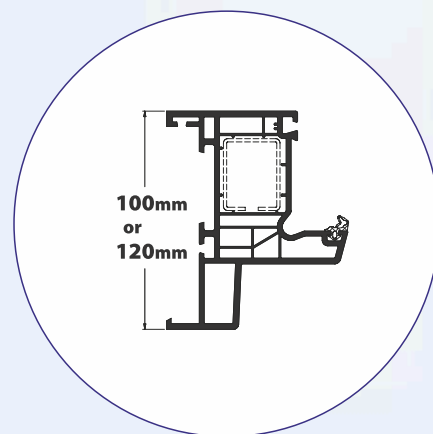
## RENOVATION FRAMES



## FLOATING MULLION WITH CENTRED HANDLE



## MONOBLOCK FRAMES

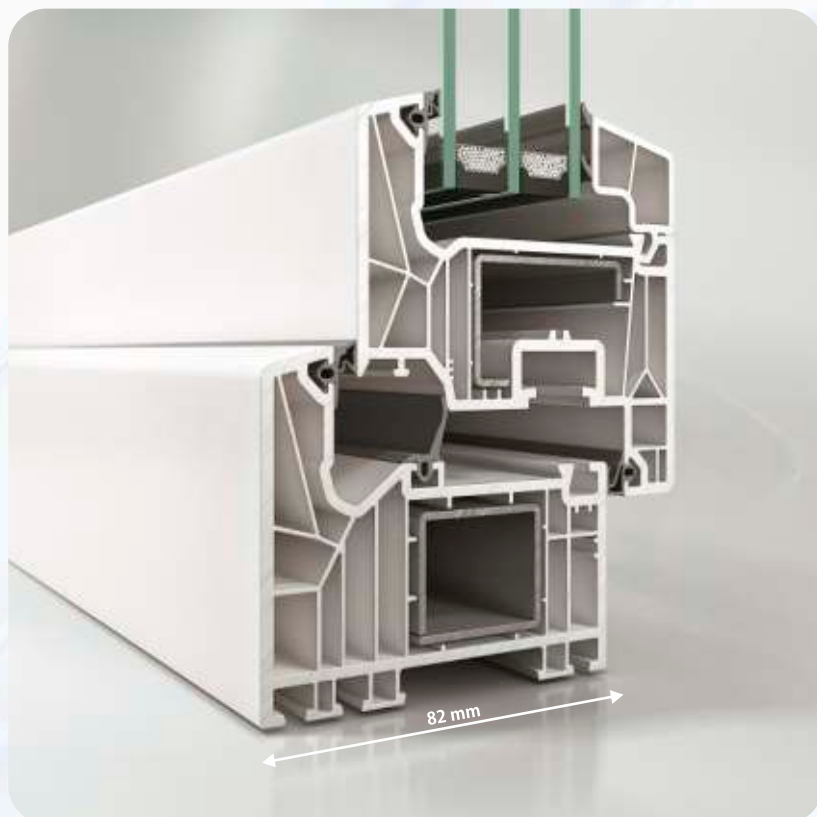


# SYSTEM LivIng

SYSTEM FOR ENERGY-EFFICIENT WINDOWS  
7 CHAMBERS 2,3 GASKETS



## LivIng MD



## LivIng

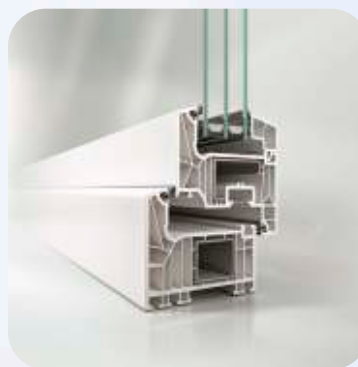
- Vento geometry with rebated appearance (Classic)
- In the centre gasket system, all fittings components are even protected from corrosion and against dirt even more reliably by the additional drainage level
- Available with a grey basic structure
- Increased basic depth for added security and burglars resistance
- Wide range of accessories

Twin system = One system with two versions (AS/MD)

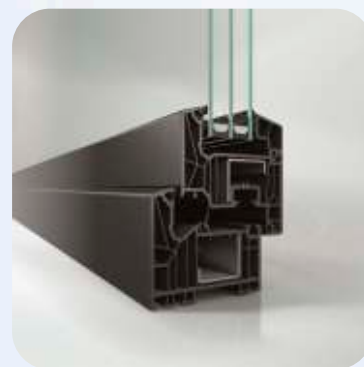
The Schüco LivIng PVC-U system is an innovative 7-chamber system that can be constructed as a twin system with both a rebate gasket and a centre gasket. In conjunction with the centre gasket, the system achieves passive house standard in accordance with ift Rosenheim. As a system with a rebate gasket, excellent thermal insulation properties and narrow face widths are also achieved.

The first weld-on gasket is integrated in the Schüco LivIng window system. Using elastic, weld-on material increases the sealing effect in the difficult corner area of the unit, whilst also allowing for a closed, visually appealing corner design without hard gasket corners. The durable, eco-friendly material keeps a tight seal throughout its entire service life.

White profiles are supplied with modern, silver-grey gaskets, foiled profiles are available with black gaskets.



LivIng AS



LivIng MD

# DOOR

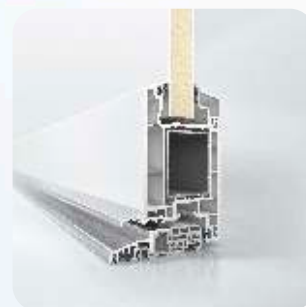
ENTRANCE DOOR  
LIFT-AND-SLIDE DOOR



## ENTRANCE DOOR

### Schüco Corona CT 70

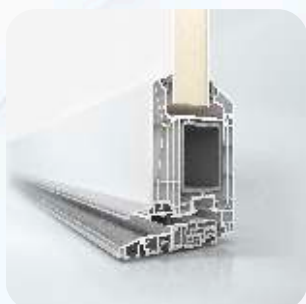
The PVC-U system Schüco Corona CT 70 AS with rebate gasket is based on a 5-chamber technology. Excellent thermal insulation properties and narrow face widths in three different vent contours are the distinctive features of this system. The two drainage levels guarantee optimum protection against wind, rain and noise. Schüco Corona CT 70 AS door systems are suitable for a wide variety of uses in both new-build and renovation projects. An extensive range of accessories ensures a high level of system security.



### Schüco LivIng - The new generation for pioneering PVC-U doors

Twin system = One system with two versions (AS/MD).

The Schüco LivIng PVC-U system is an innovative 7-chamber system that can be constructed as a twin system with both a rebate gasket and a centre gasket. In conjunction with the centre gasket, the system achieves passive house standard in accordance with ift Rosenheim. As a system with a rebate gasket, excellent thermal insulation properties and narrow face widths are also achieved. White profiles are supplied with modern, silver-grey gaskets, foiled profiles are available with black gaskets. The Schüco LivIng PVC-U door system can be used with regular door infills and leaf-enclosing door infills.



## LIFT-AND-SLIDE DOOR

### LIVINGSLIDE Innovative lift-and-slide system – highest requirements combined with economical fabrication

The new lift-and-slide system from Schüco combines maximum fabrication and installation efficiency with the highest standards of comfort and design. The innovative Schüco LivIngSlide lift-and-slide system has been designed on the basis of the Schüco LivIng system dimensions, as the basic depth of the vent frame is 82 mm. This compatibility of the systems offers access to a wide range of accessory profiles, such as glazing beads and other glazing accessories. The significant reduction in the number of parts minimises the work and costs required for storage. A particular highlight of Schüco LivIngSlide: the factory-rolled, weldable EPDM glazing gaskets in the vent frame. They ensure soft inner corners even after the welding process and thereby optimum weathertightness in this area. Continuous sealing on several levels between the vent and frame trim also reliably prevents draughts and the build up of condensation. Another strength of the new lift-and-slide system is its attractive appearance. The flush design avoids the typical gaps in the fixed field and creates a modern, streamlined appearance which is also easy to clean. The narrow centre joint guarantees maximum light penetration. Schüco LivIngSlide offers a wide variety of design options thanks to its incorporation in the Schüco colour range.



## SLIDING SYSTEM

### Sliding system Schüco S 150

The Schüco S 150 PVC-U sliding system is based on the Schüco CT 70 AS system and can be used as balcony, patio or conservatory doors. This system features the best thermal properties, large unit sizes and it is easy to operate. Narrow face widths ensure maximum light penetration. The system provides a wide range of opening options. The offer contains wide selection of lamination colours.

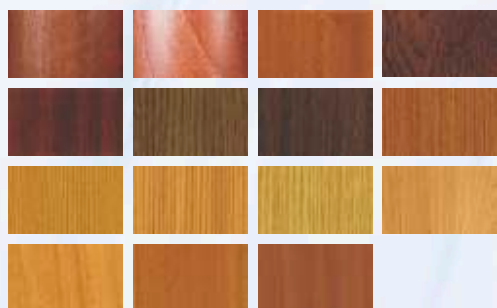




# COLOUR



## DECORATIVE FOILS



WOOD-EFFECT



WOOD-EFFECT  
-SINGLE COLOUR



SMOOTH-  
SINGLE COLOUR

METALLIC

# FRONT MOUNTED SHUTTERS

ALLUMINIUM CASE  
& SHUTTER GUIDE



## FRONT MOUNTED SHUTTERS

- Front Mounted Shutter can be mounted at any moment, because it is attached to the wall (except IT2000 type)
- Case and shutter guide are made of aluminium
- Thermoinsulating, anti-burglar, sun and heat protective
- Many types of cases, colours and sizes
- All types of front mounted shutter possible with mosquito-net



ST2000



RL2000



OS2000



OL2000



IT2000

## TOP MOUNTED SHUTTERS

### MECHANISM FOR WINDING SHUTTERS:

- Manual roller band
- Cord transmission box
- Cranking mechanism
- Spring winding mechanism
- Standard motor
- Radio motor

### SECURITY:

- Set of bolts in bottom lath
- Automatic bolts
- Multipoint lock in bottom lath
- Blockade hook (for electrically driven shutters)



CC1000



TL1000



TP1000

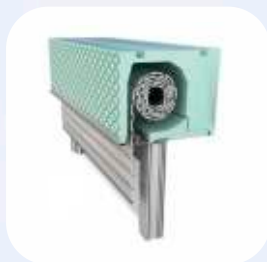


MX1200

Top Mounted Shutter can only be installed at the construction stage or when replacing windows. Shutter's case is mounted on window or door frame. The guide is screwed to the outer frame, further adjusted to the window hole. Case is invisible outside, shutter looks as a part of window. Comfortable solution in summer is a shutter with mosquito-net in TP1000.

## TOP MOUNTED BOXES BECK+HEUN

The Beck+Heun brand stands for more than 50 years of experience in the development of shutter boxes as its core product. From this core product an unrivalled product range of all variants has emerged. In addition, the product and service spectrum has been extended over time – Beck+Heun manufactures leading-edge shading and insulation solutions all around the window.



ROKA TOP 2



ROKA TOP 2 RG



ROKA TOP SHADOW



# GARAGE DOORS

SECTIONAL GARAGE DOORS  
UP AND OVER GARAGE DOORS



## KRISPOL



### UNIQUE OFFER IN THE MARKET

The offer by KRISPOL will satisfy even the most sophisticated tastes. It gives huge possibilities, limited only by the imagination of the buyer. The garage door can perfectly match the windows, roller blinders and entrance door. If you want to emphasize the individual character of your house, use the proposed decoration details.

### AESTHETICS AND FULL COLOUR RANGE

We offer our products in a wide range of colours and designs, allowing you to select components that match your taste.

### VARIETY OF FINISHING DETAILS

Depending on the size and shape of the building, you can create individual character of your home by choosing from a wide range of decors, panels and structures.



### SECTIONAL DOORS

A garage door is one of the most important elements of finishing the house. It impacts both the look of the building itself and the comfort of the people living there. The door should be functional, warm, safe and aesthetically fit the facade.

## HÖRMANN

We offer the sale of HÖRMANN products, which with its innovations and over 80 years of experience allows you to choose the offer for even the most difficult solutions.

### BEAUTIFUL AND STYLISH

Beautiful and stylish sectional garage doors are hidden when opened under the ceiling, saving space. The construction ensures maximum space after opening the gate. They have a higher ground clearance compared to swing gates. The resistance to external conditions ensures perfect sealing on four sides.

### THE PERFECT SOLUTION FOR YOUR NEEDS

Up and over garage doors are a perfect solution for free-standing garages or closing parking spaces in garages. The mechanism of opening the gate slides forward and then it is placed under the roof of the garage. HÖRMANN company offers a wide range of choice of perforated sheet metal finish, in different RAL colors and wood-like veneers. The gates cooperate with HÖRMANN electric drives.